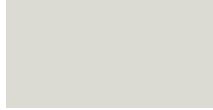


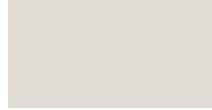


# SENTRICLAD FULL ARCHITECTURAL COLOR PALETTE

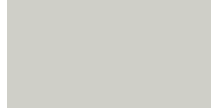
## CORE COLORS



**Regal White** □  
SR: .70 IE: .85 SRI: 85



**Bone White** □  
SR: .68 IE: .86 SRI: 82



**Stone White** Δ  
SR: .62 IE: .85 SRI: 73



**Almond** Δ  
SR: .63 IE: .86 SRI: 75



**Sandstone** Δ  
SR: .47 IE: .86 SRI: 53



**Sierra Tan**  
SR: .30 IE: .85 SRI: 30



**Medium Bronze**  
SR: .26 IE: .84 SRI: 24



**Mansard Brown**  
SR: .29 IE: .86 SRI: 29



**Dark Bronze**  
SR: .26 IE: .84 SRI: 25



**Extra Dark Bronze**-  
SR: .05 IE: .89 SRI: -1



**Patina Green**  
SR: .25 IE: .87 SRI: 24



**Classic Green**  
SR: .25 IE: .86 SRI: 24



**Hartford Green**-\*\*  
SR: .10 IE: .86 SRI: 4



**Teal**\*\*  
SR: .28 IE: .87 SRI: 28



**Military Blue**\*\*  
SR: .31 IE: .87 SRI: 32



**Slate Blue**  
SR: .27 IE: .86 SRI: 26



**Regal Blue**\*\*  
SR: .30 IE: .86 SRI: 30



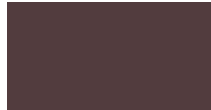
**Terra Cotta**  
SR: .39 IE: .85 SRI: 42



**Banner Red**\*\*  
SR: .44 IE: .86 SRI: 49



**Colonial Red**  
SR: .31 IE: .87 SRI: 31



**Brandywine**\*\*  
SR: .27 IE: .87 SRI: 27



**Dove Gray**  
SR: .49 IE: .87 SRI: 56



**Slate Gray** Δ  
SR: .37 IE: .86 SRI: 39



**Charcoal**  
SR: .08 IE: .90 SRI: 33



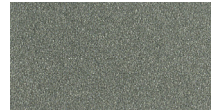
**Matte Black**  
SR: .26 IE: .86 SRI: 25



**Silversmith** Δ S15\*\* ✦  
SR: .48 IE: .80 SRI: 52



**Champagne** S20\*\* ✦  
SR: .37 IE: .83 SRI: 38



**Pewter** S11\*\* ✦  
SR: .36 IE: .85 SRI: 38



**Bright Copper** Δ S25\*\* ✦  
SR: .41 IE: .85 SRI: 44



**Bright Silver** Δ S66\*\* ✦  
SR: .55 IE: .77 SRI: 61



**Aged Copper Metallic**\*\* ✦  
SR: .25 IE: .85 SRI: 23

✦ Featuring a pearlescent mica finish; subject to premium pricing. Colors shown are as close to actual colors as allowed by the printing process. Actual metal samples are available. Colors may appear different when viewed at different angles and under different lighting conditions. Due to product improvements, changes and other factors, we reserve the right to change or delete information herein without prior notice.

Acrylic Coated Galvalume also available (not pictured).

## 26G LOW GLOSS COLORS



**Sierra Tan**  
SR: .46 IE: .87 SRI: 52



**Slate Gray**  
SR: .37 IE: .86 SRI: 39



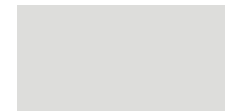
**Medium Bronze**  
SR: .31 IE: .87 SRI: 32



**Dark Bronze**  
SR: .28 IE: .86 SRI: 27



**Colonial Red**  
SR: .31 IE: .87 SRI: 31



**Regal White** □  
SR: .70 IE: .85 SRI: 85



**Dove Gray**  
SR: .49 IE: .87 SRI: 56



**Classic Green**  
SR: .31 IE: .87 SRI: 32



**Hartford Green**\*\*  
SR: .46 IE: .87 SRI: 32



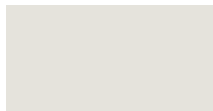
**Slate Blue**  
SR: .30 IE: .87 SRI: 31



**Matte Black**  
SR: .26 IE: .86 SRI: 25



**Mansard Brown**  
SR: .29 IE: .86 SRI: 29



**Bone White** □  
SR: .68 IE: .86 SRI: 82



**Terra Cotta**  
SR: .39 IE: .85 SRI: 42



**Charcoal**  
SR: .30 IE: .87 SRI: 31



**Bright Silver**\*\*  
SR: .55 IE: .77 SRI: 61



**Bright Copper**\*\*  
SR: .41 IE: .85 SRI: 44

ARCHITECTURAL PVDF	STEEL							ALUMINUM				
	COLOR	SR	IE	SRI	26GA.†	24GA.†	22GA.‡	18GA.‡	.032"†	.040"†	.050"†	.063"†
Regal White	.70	.85	85	LG^	●■	●	●	●■	●	●	●	●
Bone White	.68	.86	82	LG^	●■	●	●	●■	●	●	●	●
Stone White	.62	.85	73		●■			●■	●			
Almond	.63	.86	75		●■			●■	●	●		
Sandstone	.47	.86	53		●■	●		●■	●	●		
Sierra Tan	.30	.85	30	LG^	●■			●■	●	●	●	
Medium Bronze	.26	.84	24	LG^	●■	●	●	●■	●	●	●	●
Mansard Brown	.29	.86	29	LG^	●■			●■	●	●		
Dark Bronze	.26	.84	25	LG^	●■	●	●	●■	●	●	●	●
Extra Dark Bronze	.05	.89	1.0		●■			●■		●		
Patina Green	.25	.87	24		●■			●■	●			
Classic Green	.25	.86	24	LG^	●■	●		●■	●			
Hartford Green**	.10	.86	4.0	LG	●■			●■		●		
Teal**	.28	.87	28		●							
Military Blue**	.31	.87	32		●■			●■				
Slate Blue	.27	.86	26	LG^	●■			●■	●			
Regal Blue**	.30	.86	30		●■			●■	●			
Terra Cotta	.39	.85	42	LG^	●■			●■				
Banner Red**	.44	.86	49		●■			●■				
Colonial Red	.31	.87	31	LG	●■			●■				
Brandywine**	.27	.87	27		●■			●■				
Dove Gray	.49	.87	56	LG^	●■			●■	●	●		
Slate Gray	.37	.86	39	LG^	●■			●■	●			
Charcoal	.08	.90	33	LG^	●■	●		●■	●	●	●	●
Matte Black	.26	.86	25	LG^	●■	●		●■	●	●	●	●
Bright Silver++	.55	.77	61	^	●■			●■	●	●		
Silversmith++	.48	.80	52		●■			●■				
Champagne++	.37	.83	38		●■			●■				
Pewter++	.36	.85	38		●■			●■				
Bright Copper++	.41	.85	44	^	●■			●■				
Aged Copper Metallic++	.25	.85	23		●■			●■				

PAINT PERFORMANCE PROPERTIES	HOT DIPPED GALVANIZED STEEL OR GALVALUME®	ALUMINUM
<b>Accelerated Weathering</b> ASTM D 4587 (Drew Cycle Weatherometer) ASTM G-154 Chalk Rating Per ASTM D 4214, Method A	Hours: 3,000 Total Chalk: Rating 8 Color: 5 Δ E Hunter units max Hours: 5,000 Total Chalk: Rating 6 Color: 5 Δ E Hunter units max	Hours: 3,000 Total Chalk: Rating 8 Color: 5 Δ E Hunter units max Hours: 5,000 Total Chalk: Rating 6 Color: 5 Δ E Hunter units max
<b>Salt Spray</b> ASTM B 117	Hours: 1,000 Total Scribe: Rating 1/16" (2mm) Field: Rating 10, no blisters	Hours: 3,000 Total Scribe: Rating 10, no creepage Field: Rating 10, no blisters
<b>Humidity</b> ASTM D 2247	Hours: 2,000 Total Rating: 10, no blisters Per ASTM D 714	Hours: 3,000 Total Rating: 10, no blisters Per ASTM D 714
<b>Formability</b> ASTM D 4145	0T-2T	0T-2T
<b>ASTM D 522</b> (Elongation over 1/8" mandrel)	No cracking No loss of adhesion	No cracking No loss of adhesion
<b>Pencil Hardness</b> ASTM D 3363	HB-2H	HB-2H
<b>Abrasion Resistance</b> ASTM D 968	55-75 Liters of falling sand	55-75 Liters of falling sand
<b>Specular Gloss</b> ASTM D 523	30 +/- 5 at 60° 55 +/- 5 at 85°	30 +/- 5 at 60° 55 +/- 5 at 85°
<b>Reverse Impact</b> ASTM D 2794	2 x Metal thickness in inch-lbs. No loss of adhesion. No Cracking.	1/2 x Metal thickness in inch-lbs. No loss of adhesion. No cracking.
<b>Flame Test</b> ASTM E 84	Class A rated coating	Class A rated coating

† Standard Coil Width is 48.25"  
‡ Standard Coil Width is 22 GA 48.25" 18 GA 44.375"  
● Standard Color Option.  
■ 40.5" Coil Option is Available.  
▲ Additional Lead Times May Apply.  
¶ Standard Coil Width 40.5"  
LG Refers to Reflective Ratings  
^ Offered in 27-1/2" coil width  
++ Denotes Mica Colors  
\*\* Denotes exotic colors and are subject to premium pricing

**SHERWIN-WILLIAMS.**  
Coil Coatings

Sherwin-Williams® is a trademark of SWIMC LLC.  
SRI RATINGS ARE FOR GALVALUME ONLY. ALUMINUM RATINGS ARE LISTED ON [WWW.SENTRIGARD.COM](http://WWW.SENTRIGARD.COM)

**\*\*PLEASE REFER TO SENTRIGARD.COM FOR THE MOST UP TO DATE COLOR LISTING AND AVAILABILITY\*\***

**NOTES ON AVAILABILITY:**  
1. 24ga, .032, .040, .050, .063 are standard 48.25" in width. 22g 48.25" and 18ga 44.375" in width. 26ga is 40.5" standard width for painted items.  
2. Protective stippable film is standard on flat sheets.  
3. Mica++ and exotics \*\* are subject to premium pricing. Due to the unique effect of the Mica finishes, appearances may vary from batch to batch.  
4. Standard inventory is non-embossed. Embossed requests are to be quoted.  
5. Unpainted, acrylic coated, aluminum-zinc alloy steel (AZ55) is maintained in 26ga 20", 26ga 27-1/2", 26ga 24", 24ga 20", 24ga 27-1/2", 24ga 24" slit coils and 26ga 48"x120", 24ga 48"x120" flat sheets (no strippable film).  
6. All colors are supplied in Medium Gloss (20-35 at 60 deg). Low gloss on non 26ga available subject to minimum coating run.  
7. This color chart is subject to change without notice.  
Sentriclad® standard architectural colors and finishes feature 70% polyvinylidene fluoride (PVDF) resin paint systems to ensure long term color retention and performance. Custom colors and finishes are also available. Minimum quantities and set up charges may apply.